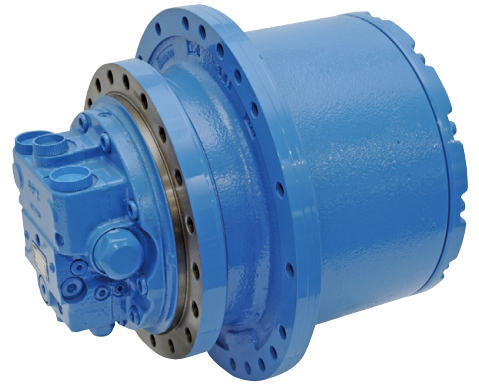
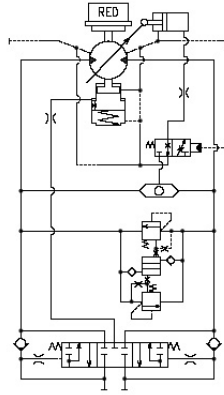


# GM Series

**Main Application** / Track motor for Excavators

**Features**

- All in one design
- Reduction gear
- Hydraulic motor
- Parking brake
- Counter balance valve
- Compact design
- 2-speed motor



GM10VA

Specifications		GM04VA	GM06VA	GM10VA	GM21VA	GM24VL
Max. Output Torque	N-m	4,020	5,590	9,810	20,600	24,200
	(kgf-m)	(410)	(570)	(1,000)	(2,100)	(2,470)
Max. Output Speed	min <sup>-1</sup>	60	60	60	60	55
Gear Ratio	1/R	53.7	max. 68.6	max. 50.111	54	max. 74.2
Max. Working Pressure	MPa	24.5	24.5	31.4	34.8	34.3
	(kgf/cm <sup>2</sup> )	(250)	(250)	(320)	(355)	(350)
Max. Motor Displacement	cm <sup>3</sup> /rev	21.4	27.5	55.8	82.8	104.8
Max. Motor Speed (Small Displ.)	min <sup>-1</sup>	3,600	3,900	3,310	3,000	2,800
Motor Parking Brake Torque	N-m	32.4	64.7	120	206	255
	(kgf-m)	(3.3)	(6.6)	(12.3)	(21)	(26)
Unit Weight	kg	43	53	83	145	217
Applicable Excavator Weight	ton	2.5~4.5	4~5.6	6~9	10~14	14~18

## Dimensions

	GM04VA	GM06VA	GM10VA	GM21VA	GM24VL
<b>A</b>	215	246	280	308	370
<b>B</b>	192	220	250	280	340
<b>C</b>	165	180	210	246	300
<b>D</b>	255	288	326	394	432
<b>E</b>	232	262	300	364	402
<b>F</b>	204	230	265	324	362
<b>G</b>	43.5	46	70.5	80	102.5
<b>H</b>	70	75.5	80	99.5	99.5
<b>J</b>	23	23	22	—	26
<b>L</b>	267.5	272.2	332.5	396	461.5
<b>M</b>	2-G1/2	2-G1/2	2-G1/2	2-G3/4	2-G3/4
<b>N</b>	G1/4	G1/4	G3/8	G1/2	G1/2
<b>P</b>	G1/4	G1/4	G1/4	G1/4	G1/4
<b>R</b>	24	24	32.5	—	38
<b>S</b>	52	52	50	106	62
<b>T</b>	10-M12	12-M14	12-M16	20-M16	30-M16
<b>U</b> *1	10-M12(φ14)	12-M14(φ16)	12-M14(φ16)	18-M16(φ18)	21-M16(φ18)

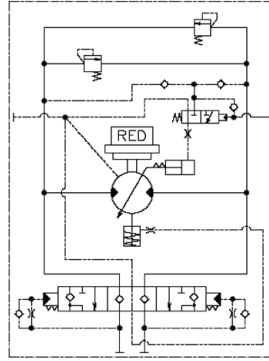
\*1 ( ) are option specifications

# GM Series

**Main Application** / Track motor for Excavators

**Features**

- All in one design
- Reduction gear
- Hydraulic motor
- Parking brake
- Counter balance valve
- Compact design
- 2-speed motor



GM60VA

Specifications		GM38VB	GM60VA	GM70VA	GM85VA
Max. Output Torque	N-m	37,300	56,600	66,200	84,700
	(kgf-m)	(3,800)	(5,770)	(6,750)	(8,640)
Max. Output Speed	min <sup>-1</sup>	50	45	40	35
Gear Ratio	1/R	55.617	40.467	50.324	60.652
Max. Working Pressure	MPa	35	34.3	34.3	34.3
	(kgf/cm <sup>2</sup> )	(357)	(350)	(350)	(350)
Max. Motor Displacement	cm <sup>3</sup> /rev	138.5	290.7	273.5	290.7
Max. Motor Speed (Small Displ.)	min <sup>-1</sup>	2,800	2,100	2,100	2,100
Motor Parking Brake Torque	N-m	470	1,170	902	1,170
	(kgf-m)	(48)	(119)	(92)	(119)
Unit Weight	kg	277	399	430	647
Applicable Excavator Weight	ton	18~25	29~34	34~40	42~48

## Dimensions

	GM38VB	GM60VA	GM70VA	GM85VA
<b>A</b>	370	480	462	493
<b>B</b>	340	440	425	455
<b>C</b>	300	380	380	410
<b>D</b>	470	525	568	665
<b>E</b>	440	492	535	620
<b>F</b>	402	450	490	570
<b>G</b>	136.5	131	154	139
<b>H</b>	98.5	102.5	112	148
<b>J</b>	113.5	71	75	79
<b>L</b>	531	571	617	629
<b>M</b>	2-G 1	2-G 1	2-G 1	2-G 1
<b>N</b>	G1/2	G1/2	G1/2	G1/2
<b>P</b>	G1/4	G1/4	G1/4	G1/4
<b>T</b>	30-M16	18-M24	20-M24	27-M24
<b>U</b>	26-M16(φ18)	26-M20	28-M20	24-M24

All data are subject to improvements and changes without notice.  
For more detail information, please consult us.