

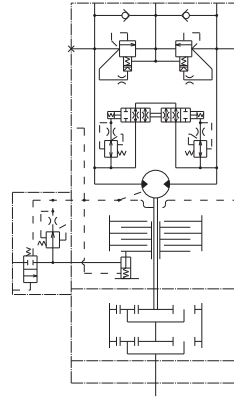
SG

Main application

Swing unit for excavator and other construction machinery

Features

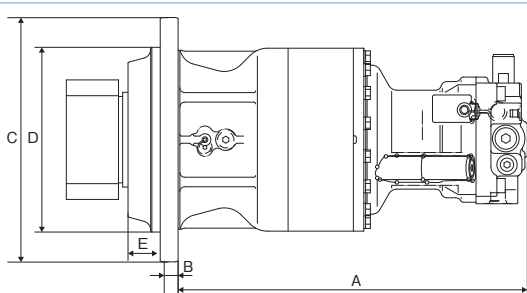
1. Light weight, compact design
 - Integral structure of cylinder block and shaft, support of the male shaft on motor cover
2. Quiet Operation
 - Highly rigid integral structure of cylinder block and shaft
3. High efficiency, excellent self-priming capability
 - Optimal hydraulic balance of valve plate enlarged oil passage.
 - Radial layout of pistons can achieve the high efficiency and high self-priming capability.
4. Improved fine operation
 - Decreasing leakage amount at low pressure and improving the start efficiency enables to improve the fine operation.
5. Abundant Optional functions.



SG08E

Specification		SG010E	SG015E	SG025E	SG04E		SG08E	SG20E	SG25E
Swing motor Model		MFC20	MFC40		MFC65	MFC80	MFC160	MFC250	MFC250
Reduction gear Model		RG010S	RG015S	RG025S	RG04S	RG04S	RG08S	RG20S	RG25S
Motor displacement	cm ³ /rev	22	39.1	45.5	64.3	79.2	151	250	250
Max. pressure	MPa	20.6	20.6	27.5	34.3	34.3	34.3	34.3	34.3
Gear ratio		16.56	14.36	19.5	17.03		19.6	22.0	19.6
Max. output torque	N·m	690	1,560	2,520	4,260	4,610	9,830	19,740	20,010
Function	Anti swing-back	○	○	○	○	○	○	○	○
	Shockless relief	○	○	○	○	○	○	○	○
	Supershockless relief	○	○	○	○	○	○	○	○
	Time delay valve	○	○	○	○	○	○	○	○
Lugricating method of reduction gear	Hydraulic Oil	○	○	○	×	×	×	×	×
	Gear oil	×	○	○	○	○	○	○	○
Unit weight	kg	32	47.5	67	96	104	230	360	410
Applicable excavator weight	ton	4~6	6~8		8~12	12~16	16~25	36~	

Outline dimensions



	SG010E	SG015E	SG025E	SG04E		SG08E	SG20E	SG25E
A	230	270	397	430	460	615	783.5	798.5
B	20	20	20	25	25	30	35	35
C	240	248	288	323	323	410	480	480
D	150	175	200	200	200	290	350	350
E	28	32	31.5	38	38	54	61	64.5